



Truck Tyres



**Grupo Sailun Latin America, Inc.**  
9840 SW 77th Ave., PH #301  
Miami, FL 33156 United States

Tel: +1 786-573-0757  
Fax: +1 786-573-0762  
Email: [info@gruposailun.com](mailto:info@gruposailun.com)

[WWW.GRUPOSAILUN.COM](http://WWW.GRUPOSAILUN.COM)

# DOC

## TABLE OF CONTENTS

STEER	S605	03	
	S606	04	
	S607	05	
	S626	06	
	S628	07	
	S629	08	
	S636	09	
	S637	10	
	S637+	11	NEW
S665	12		
S696	13		

TRAILER	S622	14	
---------	------	----	--

DRIVE	S701	15	
	S702	16	
	S705	18	NEW
	S711	19	
	S737	20	
	S740	21	NEW
	S753	22	
	S758	23	
	S767	24	
	S768	25	

ALL POSITION	S811	26	
	S812	27	
	S815	28	
	S816	29	
	S825	30	
	S827	31	
	S828	32	
	S880	33	NEW

CONSTRUCTION	S909	34	
	S911	35	
	S917	36	
	S918	37	
	S929	38	
	S951	39	NEW

### ABBREVIATIONS

Size	Size
P.R.	Ply Rating
L.I.	Load Index
S.R.	Speed Rating
T.D.	Tread Depth (mm)
O.D.	Overall Diameter (mm)
S.W.	Section Width (mm)
RIM	Rim Width (in)
S.L.R.	Static Load Radius (in)
L.C.C.	Load Carrying Capacity@kpa (kg)
A.P.	Air Pressure (kpa)

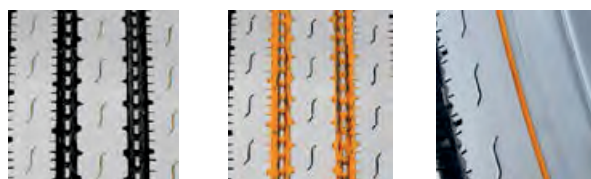
# S605


**STEER**

Size	L.I. / S.R.	P.R.	T.D.	RIM	O.D.	S.W.	S.L.R.	L.C.C.		
								Single	Dual	A.P.
			mm	inch	mm	mm	inch	kg	kg	kPa
11R22.5	144/142 M	14	14.5	8.25	1054	279	19.3	2800	2650	720
	146/143 M	16	14.5	8.25	1054	279	19.3	3000	2725	830
	148/145 M	16	14.5	8.25	1054	279	19.3	3150	2900	850
11R24.5	146/143 M	14	14.5	8.25	1104	279	20.3	3000	2725	720
	149/146 M	16	14.5	8.25	1104	279	20.3	3250	3000	830
295/75R22.5	144/141 M	14	14.5	9.00	1014	298	18.7	2800	2575	760
	146/143 M	16	14.5	9.00	1014	298	18.7	3000	2725	830
285/75R24.5	144/141 M	14	14.5	8.25	1050	283	19.4	2800	2575	760
	147/144 M	16	14.5	8.25	1050	283	19.4	3075	2800	830



The S605 is Sailun's premium long-haul steer tire, featuring a decoupling groove and five wide ribs for a stable ride at all speeds. Stone ejectors minimize tire damage, while extra-wide grooves and S-sipes effectively disperse water for excellent hydroplaning resistance.



#### Features & Benefits:

- SmartWay® Verified - approved for use on EPA SmartWay® certified equipment.
- S-sipes improve traction in wet conditions and dissipate heat for prolonged tread life.
- Unique tread wall bite edges reduce irregular wear and improve traction.
- Stone ejectors protect tire from stone drilling.
- Decoupling groove helps to minimize irregular wear.



**SMARTWAY VERIFIED TIRE:**  
APPROVED FOR USE ON EPA SMARTWAY CERTIFIED EQUIPMENT

# S606

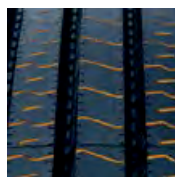


STEER

Size	L.I. / S.R.	P.R.	T.D.	RIM	O.D.	S.W.	S.L.R.	L.C.C.		
								Single	Dual	A.P.
			mm	inch	mm	mm	inch	kg	kg	kPa
11R22.5	144/142 L	14	17.5	8.25	1054	279	19.3	2800	2650	720
	148/145 M	16	17.5	8.25	1054	279	19.3	3150	2900	850
12R22.5	152/148 M	16	17.5	9.00	1085	300	19.8	3550	3150	850
11R24.5	146/143 L	14	17.5	8.25	1104	279	20.3	3000	2725	720
	149/146 L	16	17.5	8.25	1104	279	20.3	3250	3000	830
10.00R20	146/143 K	16	16.5	7.50	1054	278	19.1	3000	2725	830
	149/146 K	18	16.5	7.50	1054	278	19.1	3250	3000	930
315/70R22.5	154/150 L	18	16.0	9.00	1014	312	18.5	3750	3350	900
295/75R22.5	144/141 L	14	17.5	9.00	1014	298	18.7	2800	2575	760
295/80R22.5	152/148 M	16	17.5	9.00	1044	298	19.2	3550	3150	850
315/80R22.5	157/154 K	20	16.0	9.00	1076	312	19.7	4125	3750	900
285/75R24.5	144/141 L	14	17.5	8.25	1050	283	19.4	2800	2575	760
LT215/85R16	120/118 L	14	10.5	6.0J	772	215	19.7	1400	1320	650
LT235/85R16	120/116 L	10	12.0	6.50	806	235	14.7	1400	1250	550



The S606 is Sailun's premium steer tire, featuring extra wide shoulders with built in sipes for excellent stability and traction under all weather conditions. An extra deep 22/32" tread depth ensures the S606 delivers exceptional mileage, while an interlocking symmetrical tread block design promotes even wear and a square footprint.



#### Features & Benefits:

- Multi-sipes improve traction in wet conditions and dissipate heat for prolong tread life.
- Unique tread wall grooves help reduce irregular wear and improve traction.
- Stone ejectors protect tire from stone drilling.
- Extra deep tread pattern (22/32") with special compound for extended tread life.
- Wide footprint and square shoulder design for improved stability and mileage.



**SMARTWAY VERIFIED TIRE:**

APPROVED FOR USE ON EPA SMARTWAY CERTIFIED EQUIPMENT

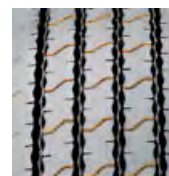
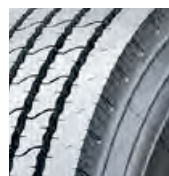


# S607 STEER

Size	L.I. / S.R.	P.R.	T.D.	RIM	O.D.	S.W.	S.L.R.	L.C.C.		
			mm	inch	mm	mm	inch	Single	Dual	A.P.
295/80R22.5	152/148 M	16	15.0	9.00	1044	298	19.2	3550	3150	850
315/80R22.5	156/150 L	18	15.5	9.00	1076	312	19.7	4000	3350	850
	161/157 G	20	15.5	9.00	1076	312	19.7	4625	4125	900



The S607 is a premium all-position regional steer tire, designed with extra wide shoulders that resist curbing damage and stone ejector buttons to reduce stone retention. Full-length sipes built into tread blocks effectively channel water for exceptional wet traction. The S607 is a versatile tire, suitable on all regional applications such as delivery trucks, buses, and concrete trucks.



## Features & Benefits:

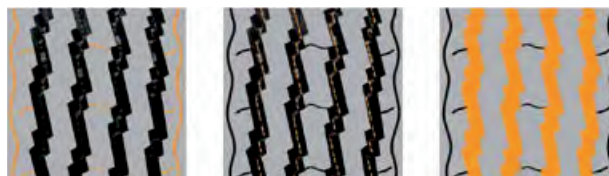
- 5-rib design and wide shoulders for improved stability.
- Tread profile designed to reduce rolling resistance and improve fuel economy for improved stability and mileage.
- Interlocking multi-sipes improve traction in wet conditions and increase stability.

# S626 STEER

Size	L.I. / S.R.	P.R.	T.D.	RIM	O.D.	S.W.	S.L.R.	L.C.C.		
			mm	inch	mm	mm	inch	Single	Dual	A.P.
								kg	kg	kPa
11R22.5	148/145 L	16	14.0	8.25	1054	279	19.3	3250	2900	850
9.00R20	141/136 L	14	13.5	7.00	1019	259	18.5	2575	2255	810
10.00R20	146/142 K	16	14.0	7.50	1054	278	19.1	3000	2630	840



The S626 is designed with tread rubber, with low heat generating qualities, with excellent burst and abrasion resistance . Using the design of four longitudinal grooves with good drainage, even distribution of ground contact pressure, prevention of irregular wear and tear, and superior manoeuvrability and comfort.



## Features & Benefits:

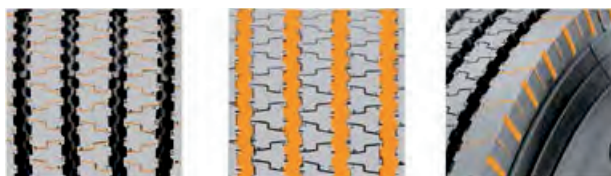
- Small cutter grooves give the tyre good heat radiation with a strong grip performance and ability of anti-slippery.
- Rubber projections at the bottom of the groove can effectively discharge clamped pebbles .
- Four main longitudinal zigzag grooves bring good directional stability to the tyre and reduce its irregular tear and wear and keep it in good drainage.

# S628 STEER

Size	L.I. / S.R.	P.R.	T.D.	RIM	O.D.	S.W.	S.L.R.	L.C.C.		
			mm	inch	mm	mm	inch	Single	Dual	A.P.
								kg	kg	kPa
11R22.5	148/145 M	16	14.5	8.25	1054	279	19.3	3250	2900	850
12R22.5	152/149 M	18	15.5	9.00	1085	300	19.8	3550	3250	930
295/80R22.5	152/148 M	16	15.0	9.00	1044	298	19.2	3550	3150	850



The S628 is a special tubeless tire, suitable for use on highways, normal roads, moderate/long distance transport as well as trucks and buses. Four longitudinal tread patterns provide the tire with good handling stability and ride comfort. The optimal design of balanced outer contour brings good heat radiation with superior high speed performance to the tire. Advanced formulations for tread wear rubber provide the tyre with excellent wear resistance.



#### Features & Benefits:

- Fine horizontal cutter grooves provide the tire with good heat radiation, strong grip performance and ability of anti-slippery.
- The optimized tread arc design produces low rolling resistance and enhances fuel-saving performance.
- Four central longitudinal grooves provide the tire with good handling stability and ride comfort.
- The shoulder cutter grooves and its steel plate are well designed to provide good heat radiation and to prevent irregular wear on its shoulder.

# S629 STEER

Size	L.I. / S.R.	P.R.	T.D.	RIM	O.D.	S.W.	S.L.R.	L.C.C.		
			mm	inch	mm	mm	inch	Single	Dual	A.P.
11R22.5	144/142 K	14	15.5	8.25	1054	279	19.3	2800	2650	720
	146/143 K	16	15.5	8.25	1054	279	19.3	3000	2725	830
	148/145 M	16	15.5	8.25	1054	279	19.3	3150	2900	850
12R22.5	152/148 M	16	15.5	9.00	1085	300	19.8	3550	3150	850
11.00R20	150/147 K	16	15.5	8.00	1085	293	19.7	3350	3075	830
295/60R22.5	150/147 L	18	15.0	9.00	934	284	17.0	2800	2575	830
315/60R22.5	152/148 L	18	15.0	9.75	950	313	17.4	3550	3150	900
315/70R22.5	152/148 M	16	16.0	9.00	1014	312	18.5	3550	3150	850
	154/150 L	18	16.0	9.00	1014	312	18.5	3750	3350	900
	156/150 L	18	16.0	9.00	1014	312	18.5	4000	3350	900
295/80R22.5	150/147 M	16	16.5	9.00	1044	298	19.2	3350	3075	830
	152/148 M	16	16.5	9.00	1044	298	19.2	3350	3000	800
	152/149 M	18	16.5	9.00	1044	298	19.2	3550	3250	900
315/80R22.5	154/150 M	16	17.0	9.00	1076	312	19.7	3750	3350	825
	156/150 L	18	17.0	9.00	1076	312	19.7	4000	3350	850
	157/154 L	20	16.5	9.00	1076	312	19.7	4125	3750	900



The S629 is suitable for the guide wheels of moderate/long distance trucks and buses running on good roads. Its proprietary compound tread formula provides excellent abrasion resistance. The unique shoulder design and the deeper shoulder fine grooves prevent the tyre from abnormal wear. Widened running surface offers a better grounding performance.



#### Features & Benefits:

- Horizontal and longitudinal shallow grooves provide the tire with strong grip performance and ability of anti-slippery.
- Its widened running surface improves its ground contact pressure and provides the tyre with better grounding performance.
- The longitudinal zigzag tread grooves at the bottom of four central grooves provide the tyre with good maneuverability and ride comfort.
- The widened shoulder and unique design for the shallow grooves on its shoulder provide its shoulder with good heat radiation and to prevent its irregular wear.



# S636 STEER

Size	L.I. / S.R.	P.R.	T.D.	RIM	O.D.	S.W.	S.L.R.	L.C.C.		
								Single	Dual	A.P.
			mm	inch	mm	mm	inch	kg	kg	kPa
10.00R20	149/146 L	18	16.5	7.50	1054	278	19.1	3250	3000	930
11.00R20	152/149 L	18	16.5	8.00	1085	293	19.7	3550	3250	930



The S636's balanced inner contour is well designed to greatly improve the durability of its belt. The tread base rubber with low heat generation reduces the defects of its shoulder. The wear resistance of its tread rubber is improved to increase its mileage. It has a good grounding imprint and receives uniform force exertion to prevent partial wear.



## Features & Benefits:

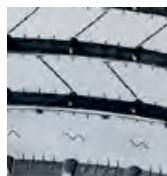
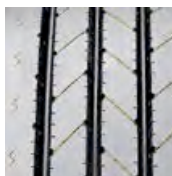
- Fine cutter grooves provide the tire with good heat radiation, stronger grip performance and ability of anti-slippery.
- Special modification for its shoulder can effectively prevent partial wear.
- Four central longitudinal grooves provide excellent maneuverability with the best groove shape and good prevention of sideslip.
- The widened running surface and the deeper groove pattern design effectively enhance the abrasion resistance of treads and increase the mileage of the tyre.

# S637 STEER

Size	L.I. / S.R.	P.R.	T.D.	RIM	O.D.	S.W.	S.L.R.	L.C.C.		
								Single	Dual	A.P.
			mm	inch	mm	mm	inch	kg	kg	kPa
9.5R17.5	129/127M	14	13.5	6.75	842	240	15.6	1850	1750	750
	132/130M	16	13.5	6.75	842	240	15.6	2000	1900	830
	143/141J	18	13.5	6.75	842	240	15.6	2725	2575	875
9R22.5	136/134 M	14	14.0	6.75	974	229	18.0	2240	2120	830
11R22.5	148/145 M	16	13.0	8.25	1054	292	19.3	3150	2900	850
245/70R17.5	143/141 J	18	13.5	7.50	789	248	14.4	2725	2575	875
205/75R17.5	124/122 M	14	13.5	6.00	753	205	13.9	1600	1500	750
215/75R17.5	135/133 L	16	13.0	6.00	767	211	14.2	2180	2060	860
235/75R17.5	143/141 L	16	13.5	6.75	797	233	14.7	2725	2575	860
225/70R19.5	128/126 L	14	13.0	6.75	811	226	15.0	1800	1700	760
245/70R19.5	133/131 M	14	13.5	7.50	839	248	15.4	2060	1950	750
265/70R19.5	140/138 M	16	14.0	7.50	867	262	15.8	2500	2360	775
255/70R22.5	140/137 M	16	14.0	7.50	930	255	17.1	2500	2300	800
	140/137 L	16	14.0	7.50	930	255	17.1	2500	2300	830
275/70R22.5	148/145 M	16	15.0	8.25	958	276	17.6	3150	2900	900
LT235/85R16	126/123 L	14	9.5	6.50	806	235	14.7	1700	1550	760



The S637 is a versatile regional all-position tire, featuring five extra-wide ribs for exceptional stability at all speeds. An extra-wide solid shoulder resists damage caused by high-scrub applications, while a mirrored tread design ensures even wear. Wide grooves designed for hydroplaning resistance, while a long-life rubber compound is engineered for extended tread life.



#### Features & Benefits:

- Multi-sipes improve traction in wet conditions and dissipate heat for prolong tread life.
- Shallow tread designed to reduced rolling resistance for improved fuel economy.
- Unique tread wall grooves/sipes to help reduce irregular wear.

S637+

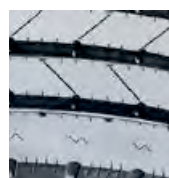
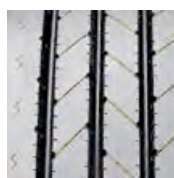


STEER

Size	L.I. / S.R.	P.R.	T.D.	RIM	O.D.	S.W.	S.L.R.	L.C.C.		
								Single	Dual	A.P.
			mm	inch	mm	mm	inch	kg	kg	kPa
9.5R17.5	129/127M	14	13.5	6.75	842	240	15.6	1850	1750	750
	132/130M	16	13.5	6.75	842	240	15.6	2000	1900	830
	143/141J	18	13.5	6.75	842	240	15.6	2725	2575	875
10R22.5	141/139M	14	15.0	7.50	1019	254	18.8	2575	2430	790
245/70R17.5	143/141J	18	13.0	7.50	789	248	14.4	2725	2575	875
205/75R17.5	124/122M	14	13.5	6.00	753	205	13.9	1600	1500	750
215/75R17.5	143/141J	14	13.0	6.00	767	211	14.2	1700	1600	700
	135/133L	16	13.0	6.00	767	211	14.2	2180	2060	860
235/75R17.5	143/141L	16	13.5	6.75	797	233	14.7	2725	2575	860
	132/130M	14	13.5	6.75	797	233	14.7	2000	1900	760
225/70R19.5	128/126L	14	13.0	6.75	811	226	15.4	1800	1700	760
265/70R19.5	140/138M	16	14.0	7.50	867	262	15.8	2500	2360	775
	143/141J	18	16.0	7.50	867	262	15.8	2725	2575	900
285/70R19.5	146/144M	16	13.5	8.25	895	283	16.3	3000	2800	900
	150/148K	18	13.5	8.25	895	283	16.3	3350	3150	900



The S637+ is a versatile regional all-position tire, featuring five extra-wide ribs for exceptional stability at all speeds. An extra-wide solid shoulder resists damage caused by high-scrub applications, while a mirrored tread design ensures even wear. Wide grooves designed for hydroplaning resistance, while a long-life rubber compound is engineered for extended tread life.



#### Features & Benefits:

- Multi-sipes improve traction in wet conditions and dissipate heat for prolong tread life.
- Shallow tread designed to reduced rolling resistance for improved fuel economy.
- Unique tread wall grooves/sipes to help reduce irregular wear.

# S665

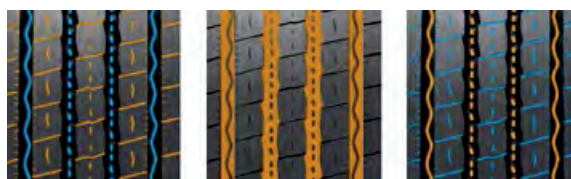


STEER

Size	L.I. / S.R.	P.R.	T.D.	RIM	O.D.	S.W.	S.L.R.	L.C.C.		
								Single	Dual	A.P.
			mm	inch	mm	mm	inch	kg	kg	kPa
11R22.5	144/142M	14	15	8.25	1054	279	19.3	2800	2650	720
	146/143M	16	15	8.25	1054	279	19.3	3000	2725	830
	148/145M	16	15	8.25	1054	279	19.3	3150	2900	850
11R24.5	146/143M	14	15	8.25	1104	279	20.3	3000	2725	720
	149/146M	16	15	8.25	1104	279	20.3	3250	3000	830
295/75R22.5	144/141M	14	15	9.00	1014	298	18.7	2800	2575	760
	146/143M	16	15	9.00	1014	298	18.7	3000	2725	830
285/75R24.5	144/141M	14	15	8.25	1050	283	19.4	2800	2575	760
	147/144M	16	15	8.25	1050	283	19.4	3075	2800	830



The S665 is the tubeless truck and bus tires, designed for highway and normal roads. Four vertical patterns adopted for excellent handling stability and ride comfort. External contour design reduces heat generation and exsures high speed performance. The new tread fomula is created for outstanding abrasion resistance.



#### Features & Benefits:

- Horizontal grooves and special tiny grooves on tire treads improve drainage performance and wet skid resistance.
- Four longitudinal grooves offer excellent handling stability and ride comfort.
- Longitudinal and circuitous grooves in the middle of the tire crown prevent clamping stones and keep good self-cleaning.



# S696 STEER

Size	L.I. / S.R.	P.R.	T.D.	RIM	O.D.	S.W.	S.L.R.	L.C.C.		
								Single	Dual	A.P.
			mm	inch	mm	mm	inch	kg	kg	kPa
7.00R16LT	115/110 M	12	12.0	5.50	775	200	14.3	1215	1060	670
	118/114 L	14	12.0	5.50	775	200	14.3	1320	1180	770
7.50R16LT	122/118 L	14	13.0	6.00	805	215	14.8	1500	1320	770
445/45R19.5	160 J	20	13.5	15.00	895	446	16.4	4500	—	900
435/50R19.5	160 J	20	13.0	14.00	931	438	16.9	4500	—	900
385/55R22.5	160 K	20	15.0	12.25	996	386	18.2	4500	—	900
385/65R22.5	158 L	18	16.0	11.75	1072	389	19.5	4250	—	830
	160 K	20	16.0	11.75	1072	389	19.5	4500	—	900
445/50R22.5	161M	20	10.5	14.00*22.5	1018	445	18.7	4625	—	—
445/65R22.5	169 K	20	16.0	13.00	1150	444	20.7	5800	—	900



The S696 is designed with the tread rubber with low heat generation .  
The low section tyre is used to replace the double tyres.  
High-intensity crown and carcass design improves tire resistance to bursting and ensures driving safely.



#### Features & Benefits:

- Small grooves provide the tyre with good heat radiation, a strong grip performance and ability of anti-slippery.
- Shut-off shoulder design enhances its tread's wear-resistance performance and effectively prevents the partial wear of its shoulder.
- The inclined surface of zigzag grooves can effectively discharge clamped pebbles.
- Super wide running surface, specially processed shoulder plus a specially designed tread formula make its wear resistance more remarkable.

# S622

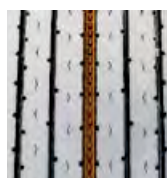


TRAILER

Size	L.I. / S.R.	P.R.	T.D.	RIM	O.D.	S.W.	S.L.R.	L.C.C.		
			mm	inch	mm	mm	inch	Single	Dual	A.P.
								kg	kg	kPa
11R22.5	144/142 M	14	10.0	8.25	1054	279	19.3	2800	2650	720
11R24.5	146/143 M	14	10.0	8.25	1104	279	20.3	3000	2725	720
255/70R22.5	140/137 L	16	11.0	7.50	930	255	17.1	2500	2300	830
295/75R22.5	144/141 M	14	10.0	9.00	1014	298	18.7	2800	2575	760
285/75R24.5	144/141 M	14	10.0	8.25	1050	283	19.4	2800	2575	760



The S622 is a premium free-rolling position trailer tire. With a decoupling groove that resists irregular sidewall wear, and wide ribs to prevent damage caused by high-scrub applications. The S622 is also a low-rolling resistance tire designed to maximize your mileage.



#### Features & Benefits:

- V-sipes improve traction in wet conditions and dissipate heat for prolonged tread life.
- Main groove stone ejectors protect tire against stone drilling.
- 5 full depth grooves for excellent traction in wet and dry conditions.
- Decoupling grooves help minimizing irregular wear.



**SMARTWAY VERIFIED TIRE:**

APPROVED FOR USE ON EPA SMARTWAY CERTIFIED EQUIPMENT

# S701

## DRIVE

Size	L.I. / S.R.	P.R.	T.D.	RIM	O.D.	S.W.	S.L.R.	L.C.C.		
								Single	Dual	A.P.
			mm	inch	mm	mm	inch	kg	kg	kPa
295/60R22.5	150/147 L	18	17.5	9.00	934	284	17.0	3350	3075	900
315/60R22.5	152/148 L	18	18.5	9.75	950	313	17.4	3550	3150	900
315/70R22.5	152/148 M	16	18.5	9.00	1014	312	18.5	3550	3150	850
	154/150 L	18	18.5	9.00	1014	312	18.5	3750	3350	900
295/80R22.5	152/148 M	16	17.5	9.00	1044	298	19.2	3350	3000	800
315/80R22.5	154/150 M	16	18.5	9.00	1076	312	19.7	3750	3350	825
	156/150 L	18	18.5	9.00	1076	312	19.7	4000	3350	850



The S701 tire is suitable for drive-position and applicable for long-distance road. The specialised rubber tread compound provides excellent abrasion performance. The variable pitch tread design and narrow horizontal grooves effectively reduces tire noise.



### Features & Benefits:

- Three longitudinal grooves offer excellent handling stability and ride comfort.
- Open shoulder design and horizontal pattern improve driving and braking performance.
- Widen road surface reduces the load pressure and provide excellent driving stability.
- Narrow and horizontal grooves reduce tire noise.

# S702 DRIVE

Size	L.I. / S.R.	P.R.	T.D.	RIM	O.D.	S.W.	S.L.R.	L.C.C.		
								Single	Dual	A.P.
			mm	inch	mm	mm	inch	kg	kg	kPa
10.00R20	146/143 K	16	18.5	7.50	1065	278	19.1	3250	3000	930
	149/146 K	18	18.5	7.50	1065	278	19.1	3550	3250	930
11.00R20	150/147 K	16	19.0	8.00	1096	293	19.7	3350	3075	830
	152/149 K	18	19.0	8.00	1096	293	19.7	3000	2725	830
205/75R17.5	124/122 L	14	15.5	6.00	753	205	14.0	1600	1500	750
215/75R17.5	126/124 M	14	15.5	6.00	767	212	14.2	1700	1600	700
235/75R17.5	132/130 M	14	15.5	6.75	797	233	14.7	2000	1900	760
	143/141 K	16	15.5	6.75	797	233	14.7	2725	2575	860
225/70R19.5	128/126 L	14	15.5	6.75	811	226	15.0	2180	2060	860



The S702's high wear resistance and low heat generation tread rubber formula ensures the service life of tyres. Its good grip performance provides excellent driving capability. The reinforcement rib between pattern blocks is designed to enhance the connection between the pattern blocks and to avoid partial wear and to prevent the pattern blocks from coming off.



## Features & Benefits:

- The steel plates of the pattern blocks are capable of the segmentation of block patterns and reduction of locally.
- Horizontal and wider grooves greatly improve self-cleaning properties of the tyre and provide the tyre with excellent driving performance.
- The connection ribs between pattern blocks are designed to reduce the movement of the pattern blocks and decrease the partial wear of the tyre.
- Widened running surface is designed to ensure safety in controlling the tyres.



Size	L.I. / S.R.	P.R.	T.D.	RIM	O.D.	S.W.	S.L.R.	L.C.C.		
			mm	inch	mm	mm	inch	Single	Dual	A.P.
								kg	kg	kpa
245/70R19.5	136/134 M	16	16.0	7.50	813	248	15.0	2240	2120	825
265/70R19.5	137/134 L	14	16.0	7.5	873	262	15.8	2300	2120	760
	140/138 M	16	16.0	7.50	867	262	15.8	2500	2360	775
	143/141 J	18	16.0	7.50	867	262	15.8	2725	2575	900
285/70R19.5	145/143 M	16	16.5	8.25	895	283	16.5	3000	2800	902
295/60R22.5	144/141 L	16	19.5	9.00	932	292	17.0	2800	2575	830
	150/147 L	18	19.5	9.00	934	284	17.0	3350	3075	900
315/60R22.5	152/148 L	18	20.5	9.75	950	313	17.6	3550	3150	900
315/70R22.5	152/148 M	16	20.5	9.00	1014	312	18.5	3550	3150	850
	154/150 L	18	20.5	9.00	1014	312	18.5	3750	3350	900
295/80R22.5	150/147 M	16	22.5	9.00	1044	298	19.2	3350	3075	830
	152/148 M	16	22.5	9.00	1044	298	19.2	3350	3000	800
	152/149 L	18	22.5	9.00	1044	298	19.2	3550	3250	900
315/80R22.5	154/150 M	16	23.0	9.00	1076	312	19.7	3750	3350	825
	154/151 L	18	23.0	9.00	1082	312	19.7	3750	3450	830
	156/150 L	18	23.0	9.00	1082	312	19.7	4000	3350	850
	157/154 K	20	22.0	9.00	1082	312	19.7	4125	3750	900

# S705

DRIVE



Size	L.I. / S.R.	P.R.	T.D.	RIM	O.D.	S.W.	S.L.R.	L.C.C.		
			mm	inch	mm	mm	inch	Single	Dual	A.P.
445/50R22.5	161L	20	20.5	14.00*22.5	1024	445	18.9	4625	--	--



Suitable for highway and normal roads, long-distance transportation, and in the drive axel position.

High wear resistance, low heat buildup tread formula to ensure the useful life of the tire.

Great grip performance that provides excellent drive capability.

Strong tread and carcass designs reducing chances of a popped tire, therefore increase driving safety.



## Features & Benefits:

- Groove ends are notched which can improve the driving performance of the tire.
- 4 zigzag grooves and three straight grooves twists are designed to provide exceeding handling performance and driving performance while preventing stones from being lodged.
- A widened shoulder and shoulder groove design allows for better head dissipation on the shoulder to prevent irregular wear.
- Widened the running surface and improved the abrasion resistance and running stability of the tire.

# S711 DRIVE

Size	L.I. / S.R.	P.R.	T.D.	RIM	O.D.	S.W.	S.L.R.	L.C.C.		
								Single	Dual	A.P.
			mm	inch	mm	mm	inch	kg	kg	kPa
8.25R20	139/137 K	16	17.0	6.50	986	236	17.8	1500	1320	770
9.00R20	144/142 K	16	17.5	7.00	1030	259	18.5	1500	1320	770
10.00R20	146/143 K	16	17.5	7.50	1065	278	19.1	1500	1320	770
	149/146 K	18	17.5	7.50	1065	278	19.1	1500	1320	770
11.00R20	150/147 K	16	18.5	8.00	1096	293	19.7	1500	1320	770
	152/149 K	18	18.5	8.00	1096	293	19.7	1500	1320	770
13R22.5	154/151 K	18	20.5	9.75	1124	320	20.5	3750	3450	830
	156/150 K	18	20.5	9.75	1124	320	20.5	4000	3350	875
12.00R24	160/157 K	20	19.5	8.50	1226	315	14.1	4500	4125	900
7.50R16LT	122/118 K	14	15.0	6.00	815	215	14.8	1500	1320	770
315/80R22.5	156/150K	18	21.0	9.00	1082	312	19.8	4000	3350	850
	161/157G	18	21.0	9.00	1082	312	19.8	4625	4125	900
	154/151L	18	21.0	9.00	1082	312	19.8	3750	3450	830
	157/154J	18	21.0	9.00	1082	312	19.8	4125	4125	900



The S711's robust carcass provides maximum load-bearing capacity. Its special tread design effectively improves its self-cleaning properties. Its deepened groove provides the tyre with a super long mileage and balanced wear.



#### Features & Benefits:

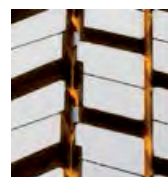
- Its narrow grooves on both sides of a groove reduce the tread rigidity and at the same time prevent its partial wear.
- The deepened horizontal zigzag grooves extending from the shoulder to the central part provides excellent driving and braking performance. Its shoulder pattern blocks connected by reinforcement ribs are designed.
- to prevent tearing of grooves and to improve its anti-partial wear performance. The connection ribs between pattern blocks are designed to reduce the movement of the pattern blocks and decrease the partial wear of the tyre.
- Its zigzag steel plate design will reduce the pattern blocks' hardness and increase its grip performance for wet roads.

# S737 DRIVE

Size	L.I. / S.R.	P.R.	T.D.	RIM	O.D.	S.W.	S.L.R.	L.C.C.		
								Single	Dual	A.P.
			mm	inch	mm	mm	inch	kg	kg	kPa
13R22.5	156/150 K	18	20.5	9.75	1136	320	20.5	4000	3350	875
10.00R20	149/146 K	18	18.5	7.50	1065	278	19.1	3250	3000	930
11.00R20	152/149 K	18	20.5	8.00	1096	293	19.7	3550	3250	930
215/75R17.5	135/133 L	16	15.0	6.00	773	211	14.2	2180	2060	860
225/70R19.5	128/126 L	14	16.0	6.75	817	226	15.0	1800	1700	760
245/70R19.5	133/131 L	14	17.0	7.50	845	248	15.7	2060	1950	760
	136/134 M	16	17.0	7.50	845	248	15.4	2240	2120	825
315/70R22.5	154/150 L	18	20.0	9.00	1020	312	18.5	3750	3350	900
295/80R22.5	152/149 L	18	20.5	9.00	1050	298	19.2	3550	3250	900
315/80R22.5	156/150 L	18	22.0	9.00	1082	312	19.7	4000	3350	850
	157/154 L	20	22.0	9.00	1082	312	19.7	4125	3750	900



The S737 is a regional pick-up and delivery drive tire, with 6-interlocking tread blocks and a symmetrical design designed to promote even wear throughout the tire's life. Tapered lateral grooves make the S737 a performer in all-weather applications.



## Features & Benefits:

- Integrated tie bars reduce irregular wear and promote increased stability.
- Angled lug and siping design improves overall traction and wet grip.
- M&S rated, all-weather lug tread designed for regional use.
- Lug-to-void ratio optimized for self-cleaning and excellent traction.



# S740

DRIVE



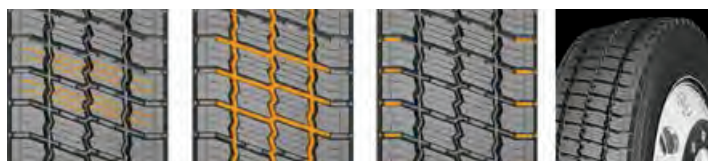
Size	L.I. / S.R.	P.R.	T.D. mm	RIM inch	O.D. mm	S.W. mm	S.L.R. inch	L.C.C.		
								Single kg	Dual kg	A.P. kPa
225/70R19.5	128/126L	14	16.5	6.75	817	226	15.4	1800	1700	760
245/70R19.5	135/133L	16	16.5	7.50	845	248	15.4	2180	2060	860



Lateral winding sipes makes the tire less likely to skid in wet conditions and improves grip performance in ice and snow.

By optimizing the outer contour of the tire, as it makes contact with the ground the pressure is uniformly dispersed effectively preventing irregular wear.

The tire has a better contact area thanks to the widened running surface.



#### Features & Benefits:

- The lateral winding sipes gives the tire great performance in snow and ice as well as less chance of skidding.
- Transverse grooves are designed to effectively improve the driving performance of the tire.
- The ribs placed in the lateral grooves on the shoulder help hold the pattern in place to prevent partial wear during use.
- Widening of the running surface provides a clear footprint.

# S753

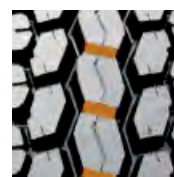
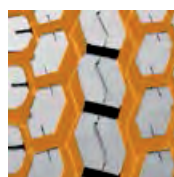


DRIVE

Size	L.I. / S.R.	P.R.	T.D.	RIM	O.D.	S.W.	S.L.R.	L.C.C.		
								Single	Dual	A.P.
			mm	inch	mm	mm	inch	kg	kg	kPa
11R22.5	144/142 L	14	20.5	8.25	1065	279	19.3	2800	2650	720
	146/143 L	16	20.5	8.25	1065	279	19.3	3000	2725	830
	148/145 L	16	20.5	8.25	1065	279	19.3	3150	2900	850
11R24.5	146/143 L	14	20.5	8.25	1116	279	20.3	3000	2725	720
	149/146 L	16	20.5	8.25	1116	279	20.3	3250	3000	830
295/75R22.5	144/141 L	14	20.5	9.00	1020	298	18.7	2800	2575	760
	146/143 L	16	20.5	9.00	1020	298	18.7	3000	2725	830
295/80R22.5	152/149K	18	18.5	9.00	1052	302	19.2	3550	3250	900
285/75R24.5	144/141 L	14	20.5	8.25	1056	283	19.4	2800	2575	760



The S753 is a premium open-shoulder drive tire, which is excellent for regional and pickup applications. Featuring an interlocking tread block design for stone and debris ejection, the S753 delivers exceptional tread life at 26/32" tread depth.



#### Features & Benefits:

- Central and edge siping for improved traction.
- Open shoulder design and tread grooves promote self-cleaning characteristics and improve traction.
- Integrated central lugs for improved stability.
- Extra strong casing design for enhanced durability.



**SMARTWAY VERIFIED TIRE:**

APPROVED FOR USE ON EPA SMARTWAY CERTIFIED EQUIPMENT

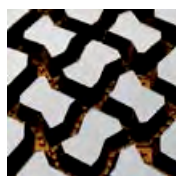
# S758

DRIVE

Size	L.I. / S.R.	P.R.	T.D.	RIM	O.D.	S.W.	S.L.R.	L.C.C.		
								Single	Dual	A.P.
			mm	inch	mm	mm	inch	kg	kg	kPa
11R22.5	146/143 G	16	25.5	8.25	1065	279	19.3	3000	2725	830
11R24.5	149/146 G	16	25.5	8.25	1116	279	20.3	3250	3000	830



The S758 is designed for severe off-road applications. With an extra-deep 32/32" tread depth and a rubber compound engineered to resist the most demanding environments, the S758 is ideal for construction, logging, and off-road environments. Stone ejectors resist the damages caused by stone retention, and an open shoulder with tapered sidewalls aids lateral stability.



#### Features & Benefits:

- Open grooves to maximize self-cleaning.
- Stone ejectors protect tire from stone drilling.
- Extra deep tread (32/32") and M&S lug pattern designed specifically for on- and off-road applications.

# S767 DRIVE

Size	L.I. / S.R.	P.R.	T.D.	RIM	O.D.	S.W.	S.L.R.	L.C.C.		
								Single	Dual	A.P.
			mm	inch	mm	mm	inch	kg	kg	kPa
11R22.5	144/142 L	14	20.0	8.25	1065	279	19.3	2800	2650	720
	146/143 L	16	20.0	8.25	1065	279	19.3	3000	2725	830
	148/145 L	16	20.0	8.25	1065	279	19.3	3150	2900	850



The S767's high wear-resistant and heat dispersive tread design ensures longer tread life and stronger grip performance to provide superior driving ability and solid tire structure that provides reliability and top performance.



#### Features & Benefits:

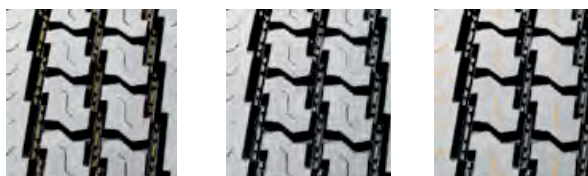
- Horizontal wide grooves improve self cleaning.
- Double S shaped tread blocks provide excellent grip and traction.
- Widened surface for safe handling.
- Connected shoulder ribs reduces wear.

# S768 DRIVE

Size	L.I. / S.R.	P.R.	T.D.	RIM	O.D.	S.W.	S.L.R.	L.C.C.		
								Single	Dual	A.P.
			mm	inch	mm	mm	inch	kg	kg	kPa
11R22.5	144/142 L	14	20.5	8.25	1065	279	19.3	2800	2650	720
	146/143 L	16	20.5	8.25	1065	279	19.3	3000	2725	830
	148/145 L	16	20.5	8.25	1065	279	19.3	3150	2900	850
11R24.5	146/143 L	14	20.5	8.25	1116	279	20.3	3000	2725	720
	149/146 L	16	20.5	8.25	1116	279	20.3	3250	3000	830
295/75R22.5	144/141 L	14	20.5	9.00	1020	298	18.7	2800	2575	760
	146/143 L	16	20.5	9.00	1020	298	18.7	3000	2725	830
285/75R24.5	144/141 L	14	20.5	8.25	1056	283	19.4	2800	2575	760
	147/144 L	16	20.5	8.25	1056	283	19.4	3075	2800	830



The S768 EFT is a premium closed shoulder drive tire, designed with a wide shoulder featuring tapered lateral edges for enhanced lateral stability. The S768 also features stone ejector buttons that reduce stone retention, and an extra-deep 26/32" tread depth for enhanced tread life.



#### Features & Benefits:

- SmartWay® Verified-approved for use on EPA SmartWay® certified equipment.
- Stone ejectors protect tire from stone drilling.
- Extra deep tread pattern (26/32") with special compound for extended tread life.
- Wide footprint and square shoulder design for improved stability and mileage.
- Multi-sipes improve traction in wet conditions and dissipate heat for prolonged tread life.



**SMARTWAY VERIFIED TIRE:**

APPROVED FOR USE ON EPA SMARTWAY CERTIFIED EQUIPMENT



# S811

## ALL POSITION

Size	L.I. / S.R.	P.R.	T.D.	RIM	O.D.	S.W.	S.L.R.	L.C.C.		
								Single	Dual	A.P.
			mm	inch	mm	mm	inch	kg	kg	kPa
7.50R20	135/133 K	16	14.0	6.00	935	215	17.1	2180	2060	900
8.25R20	139/137 K	16	13.5	6.50	974	236	17.8	2430	2300	930
9.00R20	144/142 K	16	15.5	7.00	1019	259	18.5	2800	2650	900
10.00R20	149/146 K	18	16.5	7.50	1054	278	19.1	3250	3000	930
	146/143 K	16	16.5	7.50	1054	278	19.1	3000	2725	830
11.00R20	150/147 K	16	17.0	8.00	1085	293	19.7	3350	3075	830
	152/149 K	18	17.0	8.00	1085	293	19.7	3550	3250	930
12.00R20	154/149 K	18	17.5	8.50	1125	315	20.3	3790	3270	840
	156/153 K	20	17.5	8.50	1125	315	20.3	4000	3650	900



The S811's unequal pitch of tread patterns is designed to reduce the rolling noise of the tyre. The bead reinforcement technique provides excellent load resistant power. Its closed shoulder is used both to guarantee its good stability and reduce the abnormal wear of its shoulder.



### Features & Benefits:

- The large and deep grooves on the shoulder is designed to increase the driving performance of the treads.
- The design of the unique angle for major grooves and the design for groove bottoms provide a strong grip and driving force. Three main longitudinal grooves provide good directional stability and reduce irregular wear and are adapted to various roads.
- The pattern design for the widened running surface and the puncture resistance formula are characterized by excellent resistance to puncture and to abrasion.

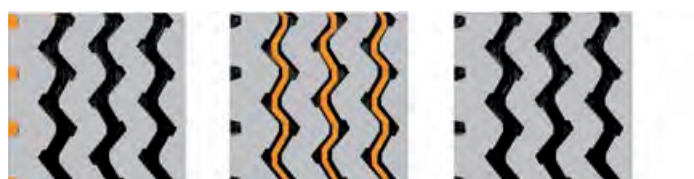
# S812

ALL POSITION

Size	L.I. / S.R.	P.R.	T.D.	RIM	O.D.	S.W.	S.L.R.	L.C.C.		
								Single	Dual	A.P.
			mm	inch	mm	mm	inch	kg	kg	kPa
7.00R16LT	118/114 K	14	12.0	6.00	775	200	14.3	1320	1180	770
7.50R16LT	122/118 K	14	13.0	6.00	805	215	14.8	1500	1320	770
8.25R16LT	128/124 K	16	14.0	6.50	855	235	15.6	1800	1600	770



The S812's unequal pitch of tread patterns is designed to reduce the rolling noise of the tyre. The bead reinforcement technique provides excellent load resistant power. Its closed shoulder is used both to guarantee its good stability and reduce the abnormal wear of its shoulder.



#### Features & Benefits:

- The reduction of the burrow volume on the shoulder enhances the performance of the tire support and improves wear resistance.
- The design of the unique angle for major grooves and the design for groove bottoms provide a strong grip and driving force.
- The pattern design for the widened running surface and the puncture resistance formula are characterized by excellent resistance to puncture and to abrasion.

# S815

ALL POSITION

Size	L.I. / S.R.	P.R.	T.D.	RIM	O.D.	S.W.	S.L.R.	L.C.C.		
								Single	Dual	A.P.
			mm	inch	mm	mm	inch	kg	kg	kPa
11R22.5	146/143 K	16	18.5	8.25	1054	279	19.3	3000	2725	830
	148/145 L	16	18.5	8.25	1054	279	19.3	3150	2900	850
12R22.5	152/149 L	18	17.5	9.00	1085	300	19.8	3550	3250	930
11R24.5	149/146 K	16	18.5	8.25	1104	279	20.3	3250	3000	830
11.00R20	152/149 K	18	17.0	8.00	1085	293	19.7	3550	3250	930
12.00R24	160/157 K	20	16.5	8.50	1226	315	22.5	4500	4125	900
275/70R22.5	148/145 K	16	17.5	8.25	958	276	17.6	3150	2900	900
295/80R22.5	152/148 M	16	17.5	9.00	1044	298	19.2	3550	3150	850
315/80R22.5	161/157 G	20	17.5	9.00	1076	312	19.7	4625	4125	900



The S815 is a mixed service tread tire, featuring a chip-resistant compound ideally suited for off-road and construction applications. A zigzag tread pattern design reduces stone retention, while maximizing traction under all applications. Sidewall protectors are engineered to provide an enhanced level of protection to the casing.



#### Features & Benefits:

- Large deep shoulder grooves for improved traction and heat dissipation.
- Interlocking lugs promote improved stability and smoother wear.
- Wide footprint and unique shoulder design for improved stability.
- Specially formulated compound and deep tread depth for improved tread life.

# S816

## ALL POSITION

Size	L.I. / S.R.	P.R.	T.D.	RIM	O.D.	S.W.	S.L.R.	L.C.C.		
								Single	Dual	A.P.
			mm	inch	mm	mm	inch	kg	kg	kPa
10.00R20	146/142 K	16	16.5	7.50	1054	278	19.1	3000	2630	840
	149/146 K	18	16.5	7.50	1054	278	19.1	3250	3000	930
11.00R20	152/149 K	18	16.5	8.00	1085	293	19.7	3550	3250	930
12.00R20	154/151 K	18	17.5	8.50	1125	315	20.3	3750	3450	830
	154/149 K	18	17.5	8.50	1125	315	20.3	3790	3270	840
	156/153 K	20	17.5	8.50	1125	315	20.3	4000	3650	900



The S816's unequal pitch of tread patterns is designed to reduce the rolling noise of the tyre. The reinforced carcass and reinforced tire bead make the service life of a tyre longer. Its closed shoulder is used both to guarantee its good stability and reduce the abnormal wear of its shoulder.



#### Features & Benefits:

- Small cutter grooves provide the tyre with a strong grip performance and ability of anti-slippery.
- Super wide running surface, specially processed shoulder plus a specially designed tread compound make its wear resistance more remarkable.
- The inclined surface of zigzag grooves and the rubber projection at the bottom of the groove can effectively discharge clamped pebbles.

# S825

## ALL POSITION

Size	L.I. / S.R.	P.R.	T.D.	RIM	O.D.	S.W.	S.L.R.	L.C.C.		
			mm	inch	mm	mm	inch	Single	Dual	A.P.
385/65R22.5	158 K	18	17.0	11.75	1072	389	19.4	4250	—	830
	160 K	20	17.0	11.75	1072	389	19.4	4500	—	900
425/65R22.5	165 K	20	18.0	12.25	1124	422	20.3	5150	—	830
445/65R22.5	168 K	20	17.0	13.00	1150	444	20.7	5600	—	830



The S825 is an all-position mixed service tire, engineered with a rubber compound that resists high-scrub and off-road applications. Stone ejector buttons reduce tire damage, and angled tread blocks are designed to deliver excellent wet traction.



### Features & Benefits:

- Interlocking lugs promote improved stability and smoother wear.
- Stone ejectors protect tire from stone drilling.
- Wide footprint and unique shoulder design for improved stability.
- Specially formulated compound for improved tread life.



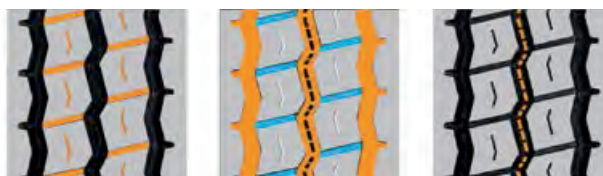
# S827

ALL POSITION

Size	L.I. / S.R.	P.R.	T.D.	RIM	O.D.	S.W.	S.L.R.	L.C.C.		
			mm	inch	mm	mm	inch	Single	Dual	A.P.
12.00R24	158/155 K	18	16.5	8.50	1226	315	22.5	4250	3875	830
	160/157 K	20	16.5	8.50	1226	315	19.9	4500	4125	900



The S827 is good for highway, common road, long-distance transport, as well as all wheel axles. The super durable tire bead structure is used to provide the tyre with superior load carrying capacity. Three longitudinal grooves and horizontal shallow sipes provide the tyres with both good manoeuvrability and driveability. Its closed shoulder is used both to guarantee its good stability and reduce the abnormal wear of its shoulder.



#### Features & Benefits:

- Fine cutter sipes on the pattern blocks and fine horizontal cutter sipe on the edge and horizontal shallow sipes provide the tyre with excellent wet-skid resistance.
- Three longitudinal grooves and horizontal shallow sipes enhance the tire's maneuverability and driveability.
- The rubber projections at the bottom of the central zigzag grooves can effectively discharge clamped pebbles, and the bottom has good self-cleaning capacity.
- The optimized tread arc design produces low rolling resistance and fuel-saving performance.

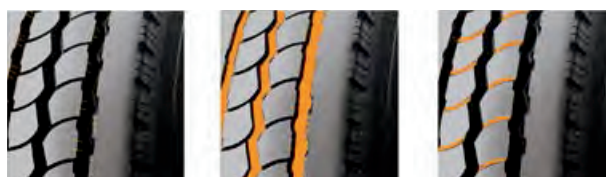
# S828

ALL POSITION STANDARD LOAD

Size	L.I. / S.R.	P.R.	T.D.	RIM	O.D.	S.W.	S.L.R.	L.C.C.		
								Single	Dual	A.P.
			mm	inch	mm	mm	inch	kg	kg	kPa
11R22.5	148/145 K	16	16.5	8.25	1054	279	19.3	3150	2900	850
12R22.5	152/148 K	16	17.0	9.00	1085	300	19.8	3550	3150	850
8.25R20	139/137 K	16	14.0	6.50	974	236	17.8	2430	2300	930
9.00R20	144/142 K	16	16.5	7.00	1019	259	18.5	2800	2650	900
10.00R20	146/143 K	16	16.5	7.50	1054	278	19.1	3000	2725	830
	149/146 K	18	16.5	7.50	1054	278	19.1	3250	3000	930
11.00R20	150/147 K	16	16.5	8.00	1085	293	19.7	3350	3075	830
	152/149 K	18	16.5	8.00	1085	293	19.7	3550	3250	930
12.00R20	154/151 K	18	17.0	8.50	1125	315	20.3	4000	3650	900
7.50R16LT	122/118 K	14	13.0	6.00	805	215	14.8	1500	1320	770
8.25R16LT	128/124 K	16	14.0	6.50	855	235	15.6	1800	1600	770



The S828 is good for highway, common road, long-distance transport, as well as all wheel axles. Three longitudinal grooves and horizontal shallow sipes provide the tyres with both good maneuverability and drivability. High-intensity crown and carcass design improves tire resistance to bursting and ensure driving safely.



## Features & Benefits:

- The tiny cutter grooves near the edge of grooves can enhance the heat radiation of pattern treads and reduce the irregular wear and tear of the tyre.
- The winding design for the central zigzag sipes and the bottom of two gutters can effectively provide the tyre with excellent maneuverability and at the same time prevent stone trapping.
- Tiny streamlined horizontal cutter grooves on the treads can provide good drainage properties and excellent wet-skid resistance capability.
- The optimized tread arc design produces low rolling resistance and enhances fuel-saving performance.

# S880


**ALL POSITION**

Size	L.I. / S.R.	P.R.	T.D.	RIM	O.D.	S.W.	S.L.R.	L.C.C.		
			mm	inch	mm	mm	inch	Single	Dual	A.P.
								kg	kg	kPa
<a href="#">225/80R17.5</a>	123/122L	14	13.5	6.75	805	226	14.7	1550	1500	700
<a href="#">245/70R19.5</a>	140/138M	16	16.0	7.50	845	248	15.4	2060	1950	760
<a href="#">265/70R19.5</a>	143/141J	16	16.0	7.50	873	262	15.8	2500	2360	775
<a href="#">275/80R22.5</a>	151/148J	18	17.5	8.25	1012	276	18.5	3450	3150	900



Four longitudinal groove with transversal groove design improve handling and wet traction.

Tread pattern pitch design reduces ride noise.

Wider running surface to provide better drive and manipulative performance.

Outer profile design helps to minimize irregular wear



#### Features & Benefits:

- Tiny transversal groove with zigzag-sipes improve wet grip and traction in wet conditions.
- Four longitudinal groove with transversal groove design improve handling and wet traction.
- Outer profile design helps to minimize irregular wear.
- Wider running surface design with special compound provides superior performance of anti-puncture and anti-abrasion.

# S909

## CONSTRUCTION

Size	L.I. / S.R.	P.R.	T.D.	RIM	O.D.	S.W.	S.L.R.	L.C.C.		
			mm	inch	mm	mm	inch	Single	Dual	A.P.
10.00R20	146/143J	16	16.5	7.50	1054	278	19.1	3000	2725	830
	149/146J	18	16.5	7.50	1054	278	19.1	3250	3000	930
11.00R20	150/147J	16	17.5	8.00	1085	293	19.7	3350	3075	830
	152/149J	18	17.5	8.00	1085	293	19.7	3550	3250	930



The S909's unique tread design and compound provides long mileage, whilst preventing irregular wear. An open-shouldered design minimises heat generation. The S909 is manufactured with a unit patterned groove to improve the tires self-cleaning qualities.



### Features & Benefits:

- Thin narrow grooves enhances driving safety on wet skid road.
- Unique pattern grooves improves tire self-cleaning.
- Horizontal large pattern blocks and unique pattern grooves provide excellent driving and breaking performance.
- The center tread pattern increases tire gripping ability.

# S911

## CONSTRUCTION

Size	L.I. / S.R.	P.R.	T.D.	RIM	O.D.	S.W.	S.L.R.	L.C.C.		
								Single	Dual	A.P.
			mm	inch	mm	mm	inch	kg	kg	kPa
13R22.5	154/151 G	18	21.0	9.75	1136	320	20.5	3750	3450	830
	156/150 K	18	21.0	9.75	1136	320	20.5	4000	3350	875
8.25R20	139/137 G	16	17.0	6.50	986	236	17.8	2430	2300	930
9.00R20	144/142 F	16	18.0	7.00	1030	259	18.5	2800	2650	900
10.00R20	146/143 G	16	18.5	7.50	1065	278	19.1	3000	2725	830
	149/146 G	18	18.5	7.50	1065	278	19.1	3250	3000	930
11.00R20	150/147 F	16	21.5	8.00	1096	293	19.7	3350	3075	830
	152/149 E	18	21.5	8.00	1096	293	19.7	3550	3250	930
12.00R20	154/151 F	18	19.5	8.50	1136	315	20.3	3750	3450	830
	156/153 F	20	19.5	8.50	1136	315	20.3	4000	3650	900



The S911's special bead design improves the durability of the tyre. Special tread design effectively improves the tyre's self-cleaning properties. Stout patterns provide powerful traction.



### Features & Benefits:

- The tiny cutter grooves near the edge of grooves can enhance the heat radiation of pattern treads and reduce the irregular wear and tear of the tyre.
- Deepened grooves will increase mileage.
- The overall pattern design, similar to the arrangement of an animal's spinal bones, is used both to strengthen the rigidity of the patterns in the central region of the crown and to provide a better balance for two shoulders of the tyre and more uniform tread wear as well as more stable running of the tyre.
- The pattern depth in this area forms a transition between the treads and the bottom of the main grooves and makes the transition of force-bearing between grooves and pattern blocks more reasonable and increases the grip of the tyre.



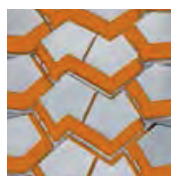
# S917

## CONSTRUCTION

Size	L.I. / S.R.	P.R.	T.D.	RIM	O.D.	S.W.	S.L.R.	L.C.C.		
								Single	Dual	A.P.
			mm	inch	mm	mm	inch	kg	kg	kPa
11R22.5	148/145 G	16	24.5	8.25	1065	279	19.3	3150	2900	850
12R22.5	152/149 G	18	24.5	9.00	1096	300	19.8	3550	3250	930
13R22.5	156/150 G	18	24.5	9.75	1136	320	22.5	4000	3350	875
11R24.5	149/146 G	16	24.5	8.25	1116	279	20.3	3250	3000	830
10.00R20	146/143 F	16	24.5	7.50	1065	278	19.1	3000	2725	830
	149/146 F	18	24.5	7.50	1065	278	19.1	3250	3000	930
11.00R20	152/149 F	18	24.5	8.00	1096	293	19.7	3550	3250	930
12.00R20	154/151 F	18	24.5	8.50	1136	315	20.3	3750	3450	830
12.00R24	160/157 F	20	32.0	8.50	1238	315	22.5	4500	4125	500
7.50R16LT	122/118 G	14	15.0	6.00	815	215	14.8	1500	1320	770
8.25R16LT	128/124 G	16	16.0	6.50	865	235	15.6	1800	1600	770
295/80R22.5	152/148 J	16	24.5	9.00	1054	298	19.2	3550	3150	850
315/80R22.5	156/150G	18	24.5	9.00	1076	312	19.7	4000	3350	850



The Sailun S917 drive tire has been engineered to perform in demanding conditions such as mining, construction and logging applications. The S917 features an aggressive multi-lug tread design for exceptional off-road traction and an enhanced rubber compound to resist cuts and chunking. Open shoulder ribs deliver superior stability and resistance to uneven wear. The S917's deep 31/32" tread depth provides long tread life and an exceptional cost per mile.



### Features & Benefits:

- Aggressive multi-lug design.
- Deep tread depth created for excellent tread life.

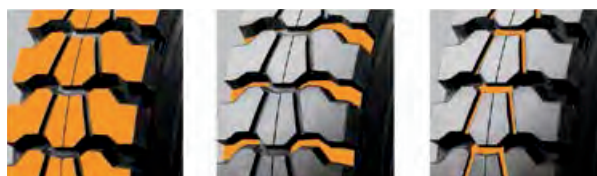
# S918

## CONSTRUCTION

Size	L.I. / S.R.	P.R.	T.D.	RIM	O.D.	S.W.	S.L.R.	L.C.C.		
			mm	inch	mm	mm	inch	Single	Dual	A.P.
10.00R20	146/143 F	16	24.5	7.50	1065	278	19.1	3000	2725	830
	149/146 F	18	24.5	7.50	1065	278	19.1	3250	3000	930
11.00R20	152/149 F	18	25.0	8.00	1096	293	19.7	3550	3250	930
12.00R20	154/151 F	18	25.0	8.50	1136	315	20.3	3750	3450	830
7.50R16LT	122/118 G	14	15.0	6.00	815	215	14.8	1500	1320	770
8.25R16LT	128/124 G	16	16.0	6.50	865	235	15.6	1800	1600	770



The S918's special tyre for short-moderate distance transport on a non-paved road. A special bead structure is used to improve the durability of the tyre. Special tread rubber is used for puncture resistance and tear resistance. Stout patterns provide strong traction performance.



### Features & Benefits:

- Large horizontal pattern blocks coordinate with deepened grooves to provide the tyre with excellent driving and braking performance.
- Open shoulders and deepened horizontal wide grooves are designed to provide excellent self-cleaning ability and strong driving force/braking force on non-paved roads.
- The connection ribs between pattern blocks are designed to increase the rigidity of the pattern blocks and to restrain the grooves from tearing.

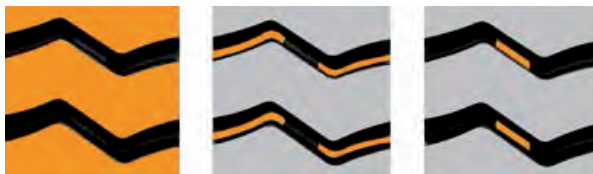
# S929

## CONSTRUCTION

Size	L.I. / S.R.	P.R.	T.D.	RIM	O.D.	S.W.	S.L.R.	L.C.C.		
								Single	Dual	A.P.
			mm	inch	mm	mm	inch	kg	kg	kPa
10.00R20	146/143 F	16	24.5	7.50	1065	278	19.1	3000	2725	830
	149/146 F	18	24.5	7.50	1065	278	19.1	3250	3000	930
11.00R20	152/149 F	18	24.5	8.00	1096	293	19.7	3550	3250	930
12.00R20	154/151 F	18	24.5	8.50	1136	315	20.3	3750	3450	830
8.25R16LT	128/124 G	16	16.0	6.50	865	235	15.6	1800	1600	770



The S929's special bead structure is designed to improve the durability of the tyre. The directional pattern design improves the wear resistance of the shoulder surface. The special tread design effectively improves the self-cleaning properties of the tyre. Stout patterns provide powerful traction.



### Features & Benefits:

- Coherence, stout horizontal block pattern gives the tyre excellent driving and braking performance.
- Deepened grooves increase mileage.
- The reinforcement ribs of the grooves make the transition of force-bearing between grooves and pattern blocks more reasonable and increase the grip of the tyre and effectively prevent the blocks from tearing.

**S951**

CONSTRUCTION



Size	L.I. / S.R.	P.R.	T.D.	RIM	O.D.	S.W.	S.L.R.	L.C.C.		
			mm	inch	mm	mm	inch	Single	Dual	A.P.
315/80R22.5	156/150K	18	23	9.00	1076	312	19.7	4000	3350	850



Large block and deep tread design, puncture resistance, block 'drop off' protection, and excellent driving and braking performance. Tread groove design effectively prevents rocks from being lodged in the tread to protect the carcass and improve tire life. This tire is especially useful on poorly built roads due to the special tread compounds that ensure excellent laceration resistance.



#### Features & Benefits:

- The bottom of the groove is reinforced with smaller rubber nodes to prevent stones from being lodged, effectively protecting the carcass.
- Anti-puncture; scratch resistant tread design.
- Tread compounds ensure excellent laceration resistance; specially created for bad roads.
- Dynamic material design allocation allows for safer driving; helps prevent accidents.





## Truck Tyres

### U.S.A.

Corporate Office: 9840 SW 77 Avenue, Suite 301  
Miami, FL 33156 – USA  
Ph: 1-786-573-0757 - Fax: 1-786-573-0762  
E-mail: [info@gruposailun.com](mailto:info@gruposailun.com)

### BRASIL

Corporate Office: Av. Cristóvão Colombo,  
3000 Sala 401 Porto Alegre - RS - Brasil - CEP: 90560-002  
SAC: 0800 005 4017 (Customer Service and Complaints)  
Ph: +55-51-3024-10-11 - Fax: +55-51-3018-1030

### CHILE

Corporate Office:  
Uno Sur 690, Piso 12, Oficina 1212  
Region del Maule Talca, Chile  
Tel: +56-071-2256544  
Cell: +56 979930123

### COLOMBIA

Corporate Office:  
Cell: +57 320 5210946

### PANAMA

Corporate Office: Bella Vista, Calle Aquilino de la Guardia, PH  
Molón Tower, Piso 6 Panamá, Panamá  
Ph: 507-6245-1918 - Fax: 507-263-6837  
Cell: 507-6245-1918

### PERU

Corporate Office:  
Cell: +51-981-531490

### VENEZUELA:

Corporate Office: Av. Milán, Edif. Mejor, Piso 1  
Caracas - Edo. Miranda -1070 – Venezuela  
Ph: +58-212-2564065 - Fax: +58-212-2564478